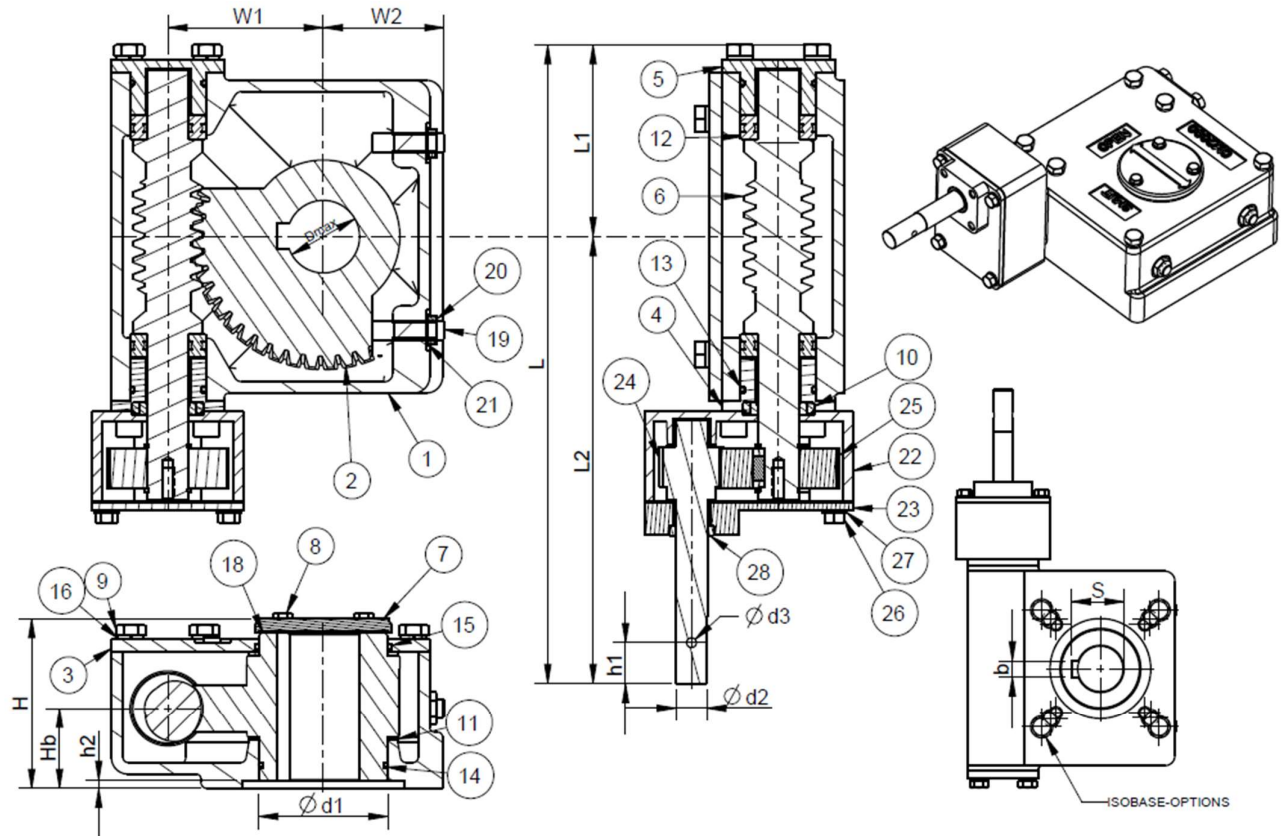


Model-OM2000S2					
Gear ratio	96	Turns to close	24	Bore dia (max.)	50mm
Rated output torque	2000Nm	Rated input torque	75Nm	Stem bore depth (max.)	91mm
Mechanical advantage	26.6	Mounting base	F12,F14, ISO 5211	Unit weight	21.2Kg



MODEL	L	L1	L2	W1	W2	H	Hb	ØDmax	S ^{+0.2}	b	Ød1	h1	Ød2	h2	Ød3	ISO
M2000S2	397.5	119	277.5	96.5	75	105	50	50	53.8	14.12 14.05	80.2 80.1	25.4	19.03 19.01	5	6	F12,F14,F16

Item	Description	Qty	Material / Standard
1	Housing	1	SG Iron IS:1865 400/15
2	Quadrant	1	SG Iron IS:1865 500/7
3	Top cover	1	SG Iron IS:1865 400/15
4	End cover front	1	SG Iron IS:1865 400/15
5	End cover rear	1	SG Iron IS:1865 400/15
6	Worm shaft	1	BS:970 709M40 COND.R
7	Indicator	1	Aluminium
8	Hex Head screws	3	IS:1367 Gr.8.8
9	Hex Head screws	14	IS:1367 Gr.8.8
10	Oil seal	1	Nitrile rubber
11	Thrust washer	2	Stainless steel - 316
12	Taper roller bearing	2	Stainless steel - 316
13	O Ring-Rear cover	2	Nitrile rubber - 70 Shore
14	O Ring-Quadrant	1	Nitrile rubber - 70 Shore

Item	Description	Qty	Material / Standard
15	O Ring-Top cover	1	Nitrile rubber - 70 Shore
16	Spring Washer	14	Carbon Steel
17	Plain washer	3	Carbon steel
18	Indicator-Gasket	1	Nitrile rubber - 70 Shore
19	Hex Socket set screw	2	IS:1367 Gr.10.9
20	Hex thin nut	2	IS:1367 Gr.8.8
21	Copper washer	2	IS:1367 Gr.8.8
22	Spur box	1	SG Iron IS:1865 400/15
23	Spur cover	1	SG Iron IS:1865 400/15
24	Pinion	1	BS:970 709M40 COND.R
25	Spur gear	1	BS:970 709M40 COND.R
26	Hex Head screws	4	IS:1367 Gr.8.8
27	Spring Washer	4	IS:1367 Gr.8.8
28	Oil seal	1	Nitrile rubber