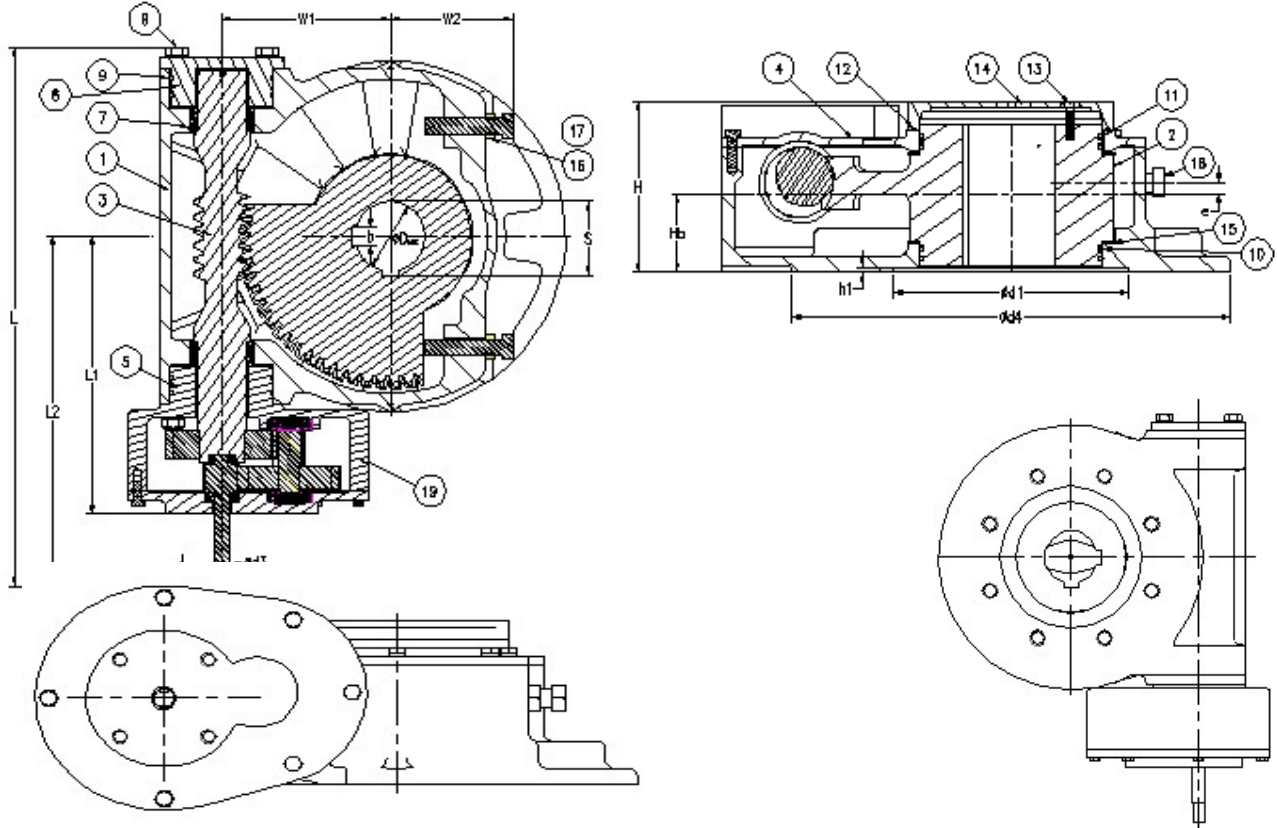


Model-OM50000					
Gear ratio	1188	Turns to close	297	Bore dia (max.)	180mm
Rated output torque	50000Nm	Rated input torque	126Nm	Stem bore depth (max.)	250Nm
Mechanical advantage	396	Mounting base	F35,F40, ISO 5211	Unit weight	300Kg



MODEL	L	L1	L2	W1	W2	H	Hb	e	ØDmax	s <sup>+0.2</sup>	b	Ød1	h1	Ød2	h2	Ød3	Ød4	ISO
OM50000	835	295	540	305	189	250	110	3	180	190.4	45.18 45.08	300	6	23.90 23.84	28	6	540	F30,F35,F40

Item	Description	Qty	Material / Standard
1	Housing	1	SG Iron IS:1865 400/15
2	Quadrant	1	SG Iron IS:1865 500/7
3	Worm shaft	1	BS:970 79M40 (En19R)
4	Top cover	1	SG Iron IS:1865 400/5
5	End cover front	1	SG Iron IS:1865 400/15
6	End cover rear	1	SG Iron IS:1865 400/15
7	Thrust bearing	2	Stainless Steel 316
8	Hex screws	32	IS:1367 Gr.8.8
9	O-Ring	2	Nitrile rubber - 70 Shore
10	O-Ring Quadrant	1	Nitrile rubber - 70 Shore

Item	Description	Qty	Material / Standard
11	O-Ring Top cover	1	Stainless steel - 316
12	O-Ring Indicator	1	Nitrile rubber - 70 Shore
13	Indicator	1	Carbon Steel
14	Hex screw	3	Carbon steel IS:1367 Gr8.8
15	Thrust washer	2	Stainless steel
16	Washer	2	Stainless steel
17	Hex nut	2	Carbon steel IS:1364
18	Stopper screw	2	Carbon steel
19	Spur gear	1	SG Iron IS:1865 400/15