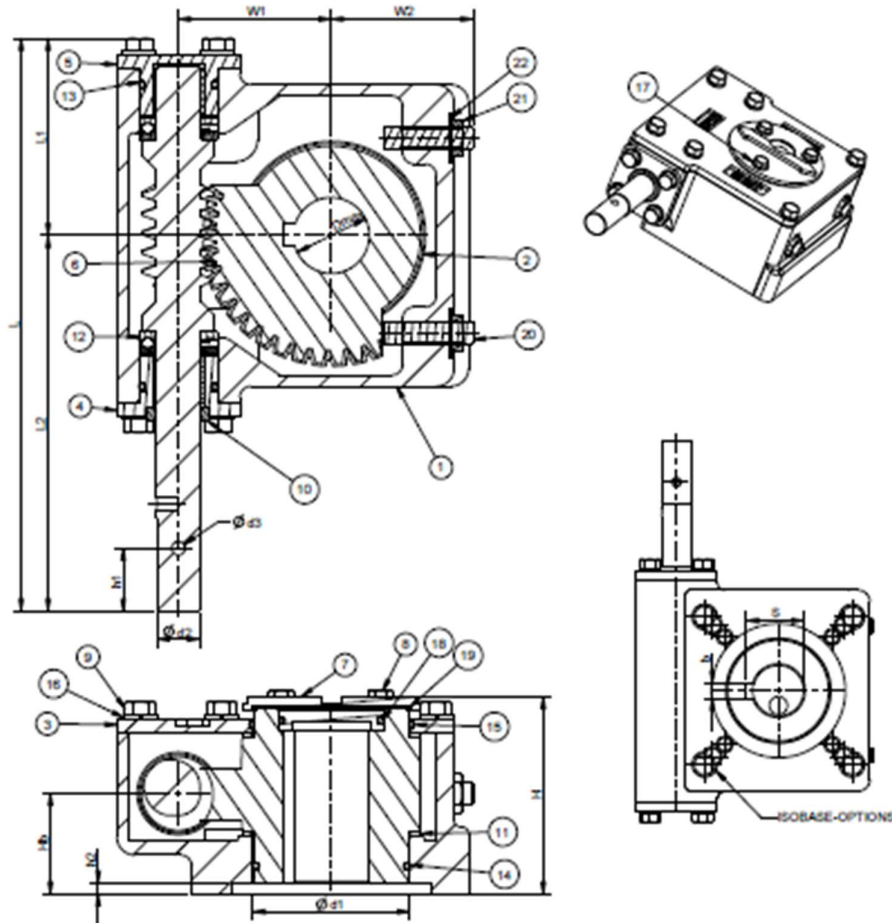


Model-OM900					
Gear ratio	40	Turns to close	10	Bore dia (max.)	45mm
Rated output torque	900Nm	Rated input torque	68Nm	Stem bore depth (max.)	78mm
Mechanical advantage	13.3	Mounting base ISO 5211	F10,F12, F14	Unit weight	7.4Kg



MODEL	L	L1	L2	W1	W2	H	Hb	ØDmax	S ^{+0.2}	b	Ød1	h1	Ød2	h2	Ød3	ISO
OM900	256	88	168	68.5	63.5	88	45	45	48.8	14.12 14.05	70.3 70.2	28	19.03 19.01	5	6	F10,F12,F14

Item	Description	Qty	Material / Standard
1	Housing	1	SG Iron IS:1865 400/15
2	Quadrant	1	SG Iron IS:1865 500/7
3	Top cover	1	SG Iron IS:1865 400/15
4	End cover front	1	SG Iron IS:1865 400/15
5	End cover rear	1	SG Iron IS:1865 400/15
6	Worm shaft	1	BS:970 709M40 COND.R
7	Indicator	1	Aluminium
8	Hex Head screws	3	IS:1367 Gr.8.8
9	Hex Head screws	14	IS:1367 Gr.8.8
10	Oil seal	1	Nitrile rubber
11	Thrust washer	2	Stainless steel - 316

Item	Description	Qty	Material / Standard
12	Thrust bearing	2	Stainless steel - 316
13	O Ring-Rear cover	2	Nitrile rubber - 70 Shore
14	O Ring-Quadrant	1	Nitrile rubber - 70 Shore
15	O Ring-Top cover	1	Nitrile rubber - 70 Shore
16	Spring Washer	14	Carbon Steel
17	Plain washer	3	Carbon steel
18	O Ring-Indicator	1	Nitrile rubber - 70 Shore
19	Indicator-Gasket	1	Nitrile rubber - 70 Shore
20	Hex Socket set screw	2	IS:1367 Gr.10.9
21	Hex thin nut	2	IS:1367 Gr.8.8
22	Copper washer	2	IS:1367 Gr.8.8