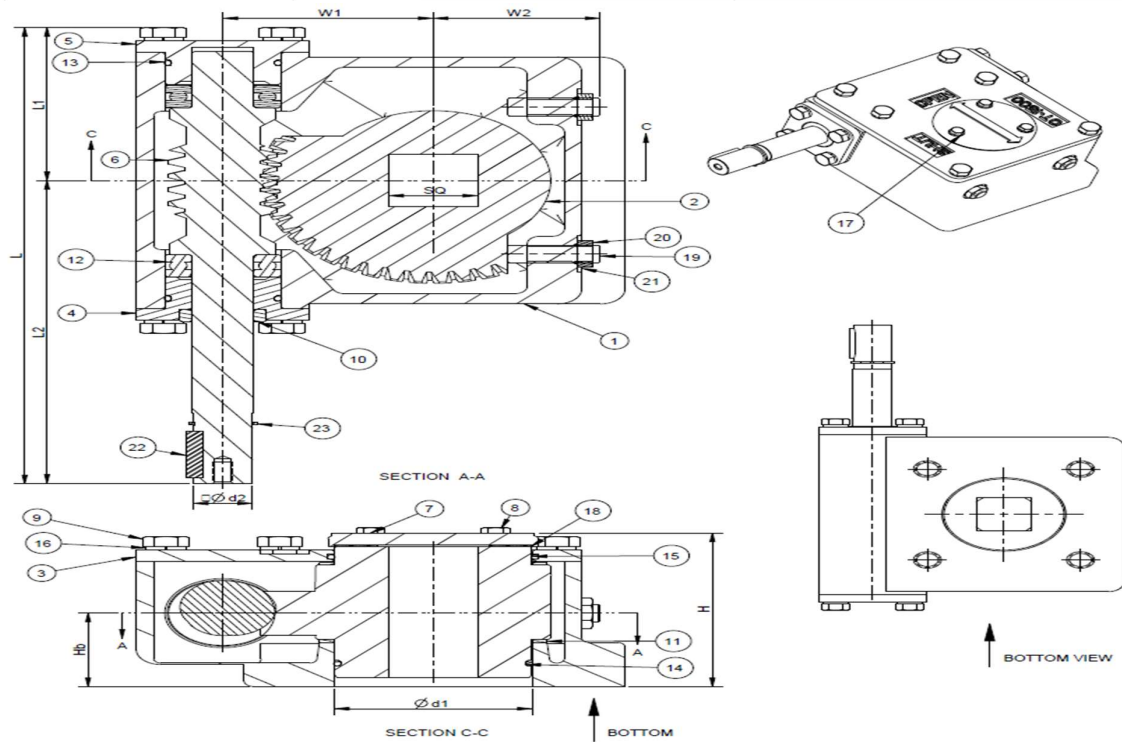


| Model-OT1500 | | | | | |
|----------------------|--------|--------------------|----------------------|------------------------|------|
| Gear ratio | 44 | Turns to close | 11 | Bore Sq (max.) | 36mm |
| Rated output torque | 1500Nm | Rated input torque | 110Nm | Stem bore depth (max.) | 91mm |
| Mechanical advantage | 13.6 | Mounting base | F12,F14, ISO 5211 | Unit weight | 15Kg |



| MODEL | L | L1 | L2 | W1 | W2 | H | Hb | Ød1 | Ød2 | SQ | ISO |
|--------|-----|-------|-----|----|------|-----|----|--------------|----------------|--------------|-------------|
| OT1500 | 311 | 104.6 | 206 | 85 | 67.5 | 102 | 50 | 80.2 80.1 | 23.90 23.84 | 36.2 36.1 | F10,F12,F14 |

| Item | Description | Qty | Material / Standard |
|------|----------------------|-----|-----------------------|
| 1 | Housing | 1 | C.I-IS210Gr.FG220 |
| 2 | Quadrant | 1 | SG Iron IS:1865 500/7 |
| 3 | Top cover | 1 | C.I-IS210Gr.FG220 |
| 4 | End cover front | 1 | C.I-IS210Gr.FG220 |
| 5 | End cover rear | 1 | C.I-IS210Gr.FG220 |
| 6 | Worm shaft | 1 | BS:970 080M40(EN-8) |
| 7 | Indicator | 1 | Aluminium |
| 8 | Hex Head screws | 3 | IS:1367 Gr.8.8 |
| 9 | Hex Head screws | 14 | IS:1367 Gr.8.8 |
| 10 | Oil seal | 1 | Nitrile rubber |
| 11 | Thrust washer | 2 | Stainless steel - 316 |
| 12 | Taper roller bearing | 2 | Stainless steel - 316 |

| Item | Description | Qty | Material / Standard |
|------|----------------------|-----|---------------------------|
| 13 | O Ring-Rear cover | 2 | Nitrile rubber - 70 Shore |
| 14 | O Ring-Quadrant | 1 | Nitrile rubber - 70 Shore |
| 15 | O Ring-Top cover | 1 | Nitrile rubber - 70 Shore |
| 16 | Spring Washer | 14 | Carbon Steel |
| 17 | Plain washer | 3 | Carbon steel |
| 18 | Indicator-Gasket | 1 | Nitrile rubber - 70 Shore |
| 19 | Hex Socket set screw | 2 | IS:1367 Gr.10.9 |
| 20 | Hex thin nut | 2 | IS:1367 Gr.8.8 |
| 21 | Copper washer | 2 | IS:1367 Gr.8.8 |
| 22 | Key | 1 | Steel |
| 23 | Circlip | 1 | Carbon Steel-DIN 471 |