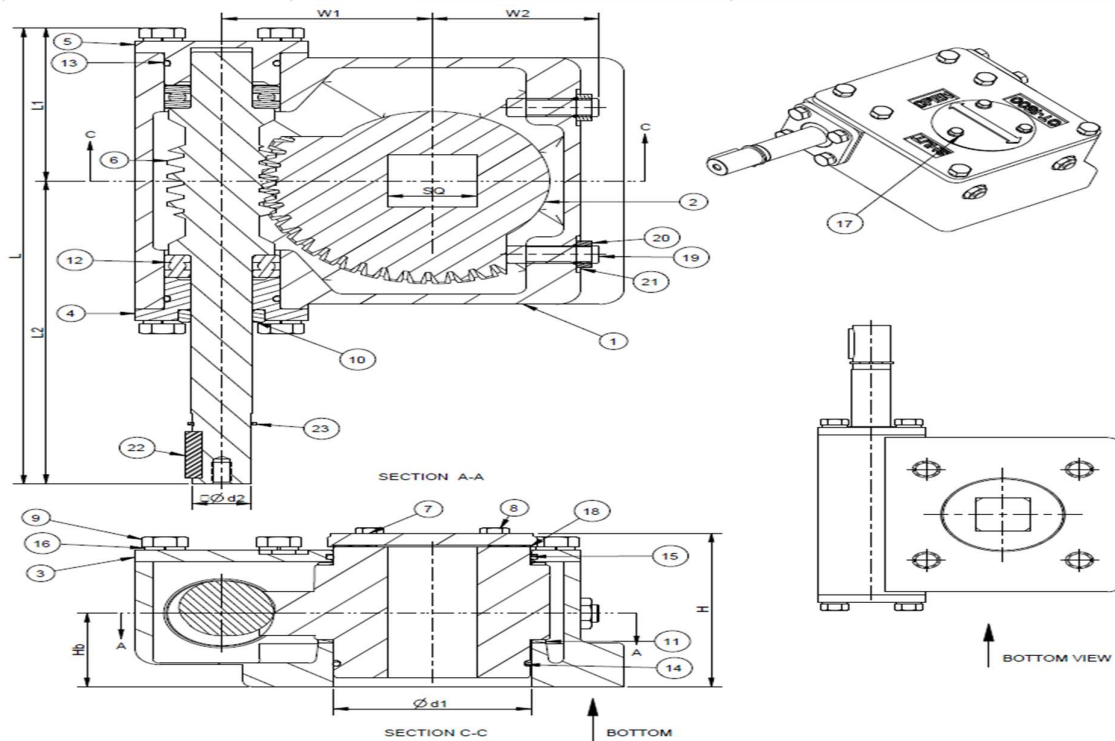


Model-OT2000					
Gear ratio	48	Turns to close	12	Bore Sq (max.)	46mm
Rated output torque	2000Nm	Rated input torque	135Nm	Stem bore depth (max.)	91mm
Mechanical advantage	14.8	Mounting base	F12,F14, F16	Unit weight	17Kg



MODEL	L	L1	L2	W1	W2	H	Hb	Ød1	Ød2	SQ	ISO
OT2000	309	119	220	96.5	75	105	50	80.2 80.1	23.90 23.84	46.2 46.1	F10,F12,F14

Item	Description	Qty	Material / Standard
1	Housing	1	C.I-IS210Gr.FG220
2	Quadrant	1	SG Iron IS:1865 500/7
3	Top cover	1	C.I-IS210Gr.FG220
4	End cover front	1	C.I-IS210Gr.FG220
5	End cover rear	1	C.I-IS210Gr.FG220
6	Worm shaft	1	BS:970 080M40(EN-8)
7	Indicator	1	Aluminium
8	Hex Head screws	3	IS:1367 Gr.8.8
9	Hex Head screws	14	IS:1367 Gr.8.8
10	Oil seal	1	Nitrile rubber
11	Thrust washer	2	Stainless steel - 316
12	Taper roller bearing	2	Stainless steel - 316

Item	Description	Qty	Material / Standard
13	O Ring-Rear cover	2	Nitrile rubber - 70 Shore
14	O Ring-Quadrant	1	Nitrile rubber - 70 Shore
15	O Ring-Top cover	1	Nitrile rubber - 70 Shore
16	Spring Washer	14	Carbon Steel
17	Plain washer	3	Carbon steel
18	Indicator-Gasket	1	Nitrile rubber - 70 Shore
19	Hex Socket set screw	2	IS:1367 Gr.10.9
20	Hex thin nut	2	IS:1367 Gr.8.8
21	Copper washer	2	IS:1367 Gr.8.8
22	Key	1	Steel
23	Circlip	1	Carbon Steel-DIN 471