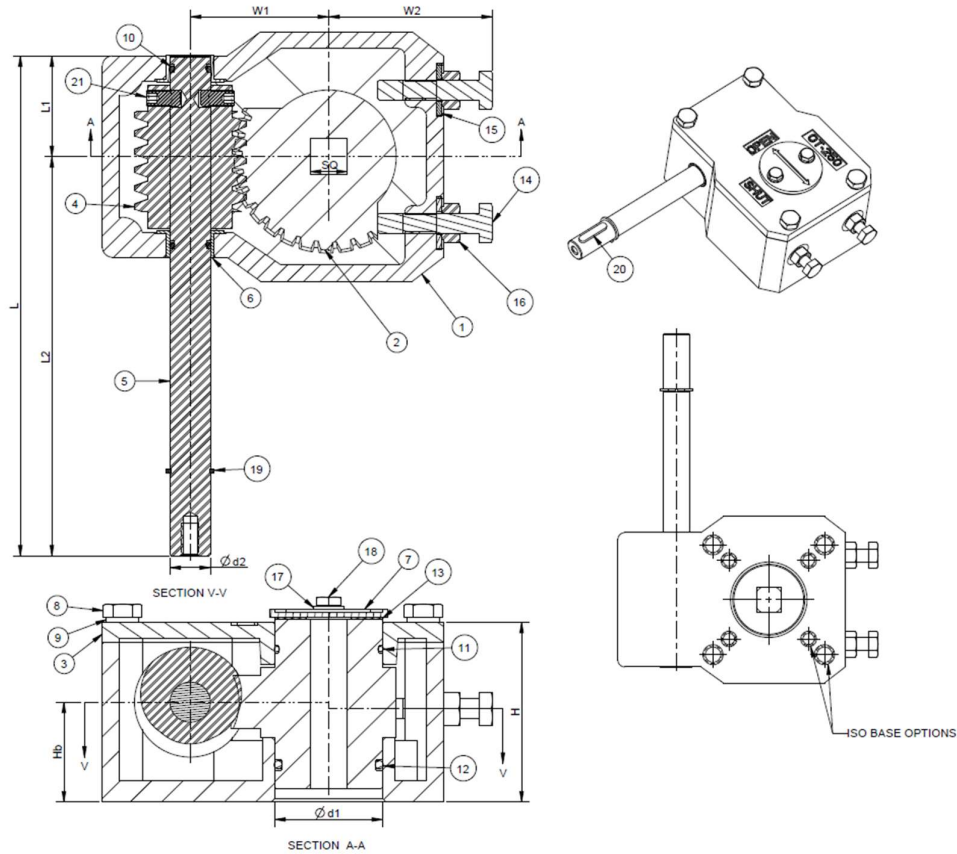


Model-OT250					
Gear ratio	30	Turns to close	7	Bore Sq (max.)	14mm
Rated output torque	250Nm	Rated input torque	31.25Nm	Stem bore depth (max.)	56mm
Mechanical advantage	8	Mounting base ISO 5211	F05,F07	Unit weight	2Kg



MODEL	L	L1	L2	W1	W2	H	Hb	Ød1	Ød2	SQ	ISO
OT250	150.25	30.25	120	41	48.5	54	30	32.1	12.00	14.20	F05,F07
								32.0	11.98	14.10	

Item	Description	Qty	Material / Standard
1	Housing	1	C.I-IS210Gr.FG220
2	Quadrant	1	SG Iron IS:1865 500/7
3	Top cover	1	C.I-IS210Gr.FG220
4	Worm	1	BS:970 080M40(EN-8)
5	Shaft	1	BS:970 080M40(EN-8)
6	Bush	2	Phosphor bronze
7	Indicator	1	Aluminium
8	Hex Head screws	4	IS:1367 Gr.8.8
9	Spring washer	4	Carbon steel
10	O Ring	2	Nitrile rubber
11	O Ring	1	Nitrile rubber

Item	Description	Qty	Material / Standard
12	O Ring	1	Nitrile rubber
13	Indicator-Gasket	1	Nitrile rubber - 70 Shore
14	Hex Head screws	2	IS:1367 Gr.8.8
15	Copper washer	2	IS:1367 Gr.8.8
16	Hex nut	2	IS:1367 Gr.8.8
17	Plain washer	2	Carbon steel
18	Hex Head Bolt	2	IS:1367 Gr.8.8
19	Circlip	1	Carbon Steel-DIN 471
20	Key	1	Steel
21	Hex socket set screw	2	DIN 913